



Microsoft Dynamics CRM / XRM Platform



User Guide

CRM Version 4.0

Spell Check is an Add in to Microsoft Dynamics CRM / XRM which allows Users to check their spelling through-out Microsoft Dynamics CRM and with focus to Templates and Forms, individual Form Tabs, and Fields.

Spell Check is the simple but essential missing feature that can be added in moments. Spell check is available for most languages.



Introduction:

Spell Check is an add-in to the Microsoft Dynamics CRM / XRM platform which allows CRM users to check their spelling through-out Microsoft Dynamics CRM and with focus to Templates and Forms, individual Form Tabs, and Fields.

Spell Check for Dynamics CRM is developed to the Microsoft Dynamics CRM Solution Development Kit (SDK) and is seamlessly and elegantly implemented within CRM. Spell Check is a valuable addition for any CRM user in any customer facing or communications oriented environment. Accurate spelling is expected!

Spell Check comes standard with US English Languish dictionary but the following languages may be substituted for a one-time \$100.00 language module additional charge.

Languages Available:

Table of Contents:

| | |
|--|----|
| Mandatory Requirements of Spell Check for Dynamics CRM:..... | 2 |
| Installing Spell Check for Dynamics CRM: | 3 |
| Running the Spell Check for Dynamics CRM Configuration Wizard: | 5 |
| Removing Spell Check button from the ISV toolbar: | 8 |
| Uninstall Spell Check for Dynamics CRM 4.0:..... | 11 |
| Toubleshooting Spell Check for Dynamics CRM 4.0:..... | 13 |

Mandatory Requirements of Spell Check for Dynamics CRM:

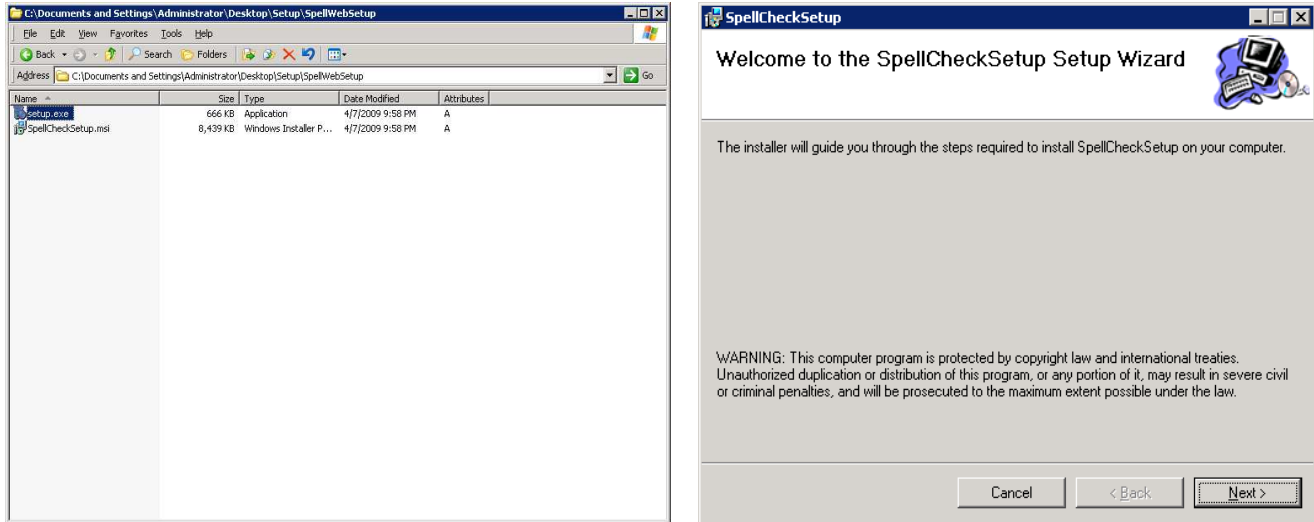
Net (dot Net) Framework3.5 with sp1

Download the .Net Framework from this link:

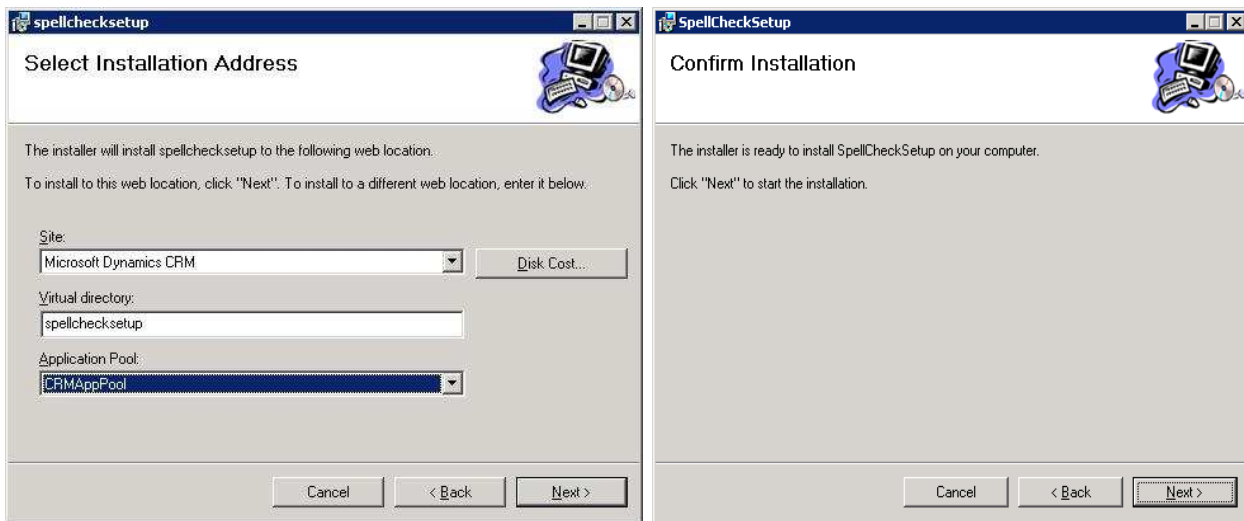
<http://www.microsoft.com/downloads/details.aspx?FamilyID=AB99342F-5D1A-413D-8319-81DA479AB0D7&displaylang=en>

Installing Spell Check for Dynamics CRM:

To install MTC' Spell Checker for Dynamics CRM, Click on the **Setup** file as shown in the figure below:



Welcome to the MTC Spell Checker Setup Wizard opens as shown, Click **NEXT**

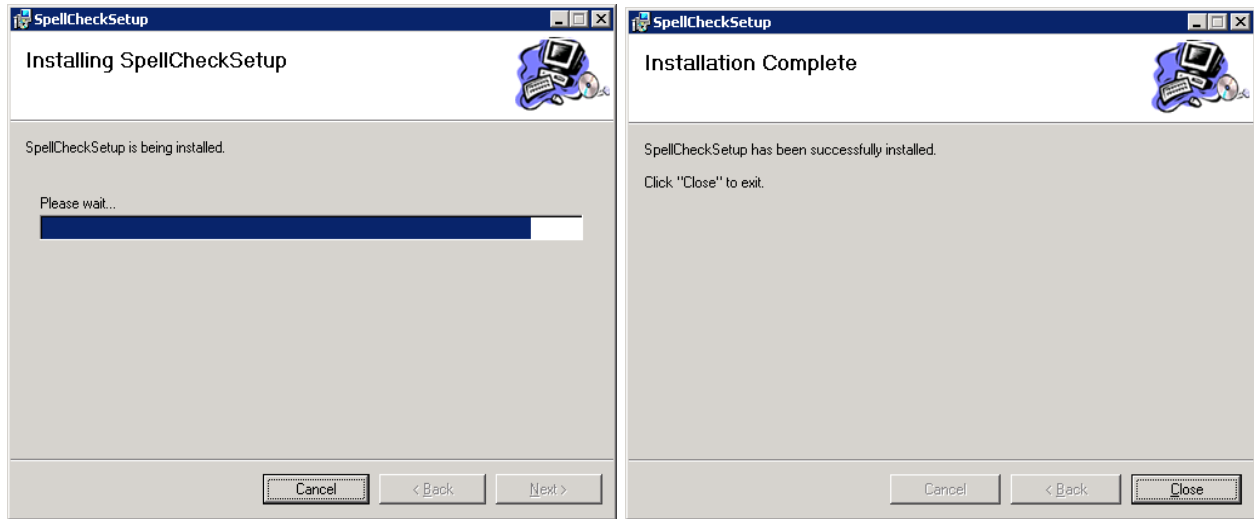


From the Dropdown List select the web location as "Microsoft Dynamics CRM" as shown above.

After selecting the "Microsoft Dynamics CRM" from the dropdown list click on **NEXT** as shown.

To start the MTC Dynamics CRM Spell Checker installation click on **NEXT** as shown below:

Once you click on **NEXT** the Spell Checker gets installed as shown:



Once the Dynamics CRM Spell Checker installation is completed successfully the following screen is shown,
Click on **CLOSE** to exit.

Running the Spell Check for Dynamics CRM Configuration Wizard:

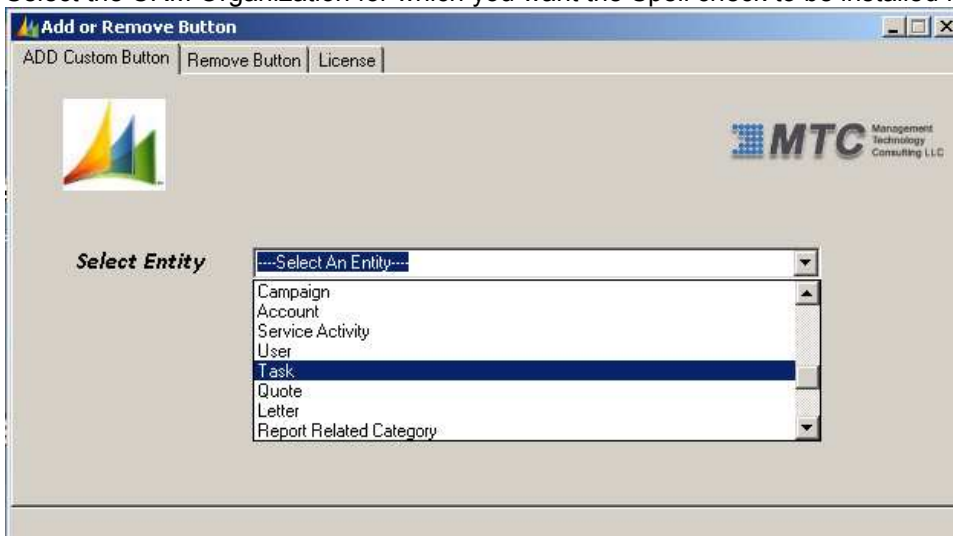
After completing the setup of Spell Check, an icon is created on the desktop as shown below.

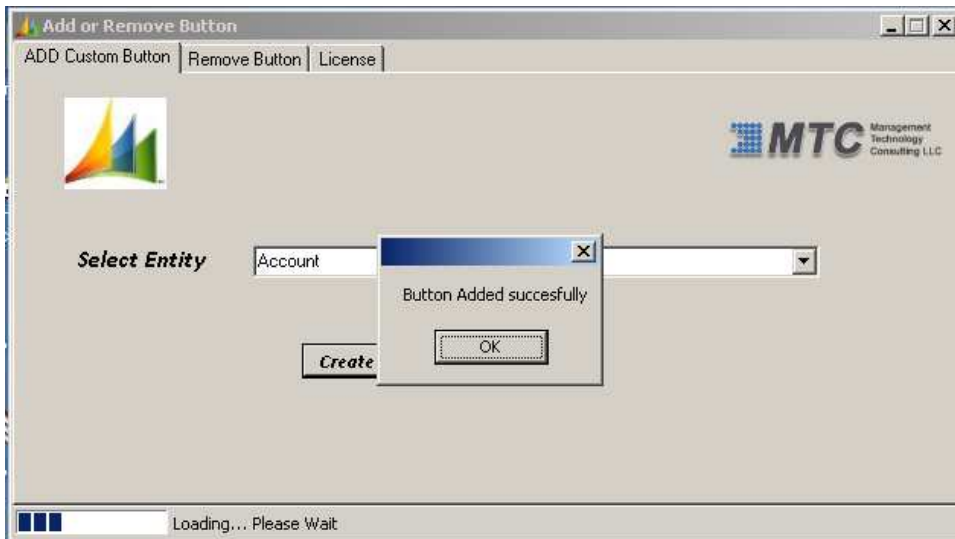


Double click on the icon "SpellChecker" and you will be guided through MTC Spell Checker installation wizard. Enter the CRM server path name in "Select the Machine" and select the organization name from the dropdown for which you want the spell checker to be installed.

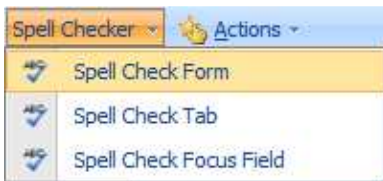
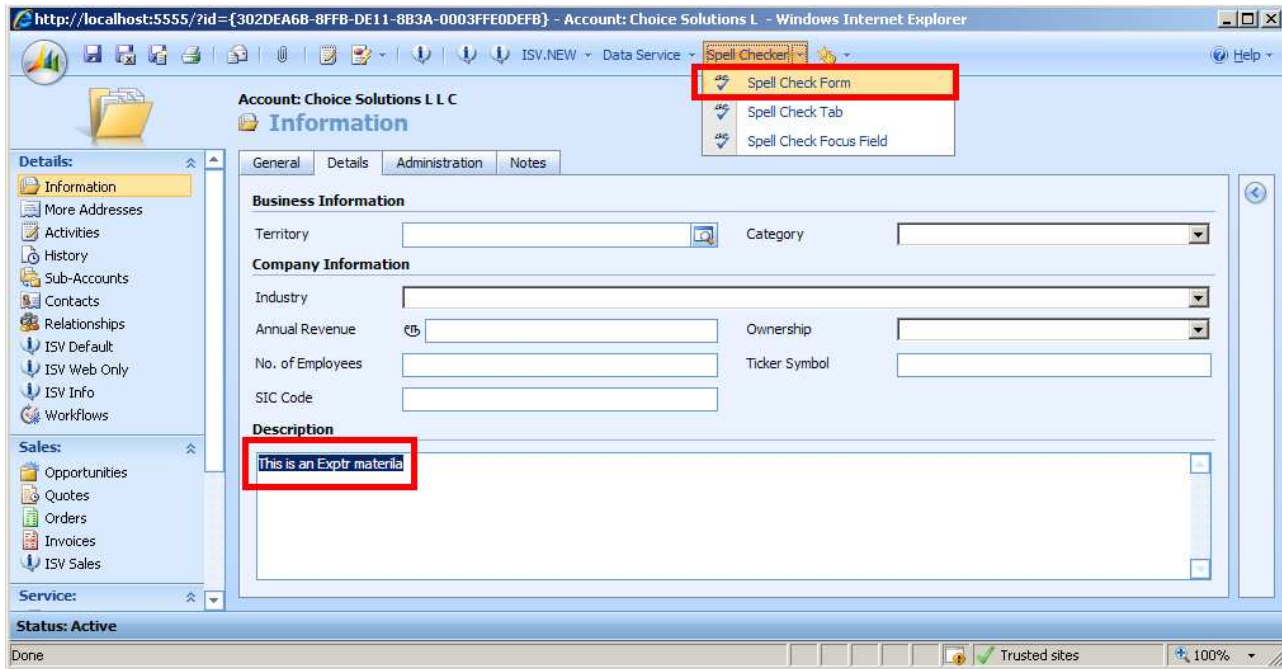


Select the CRM Organization for which you want the Spell check to be installed from the drop-down list.

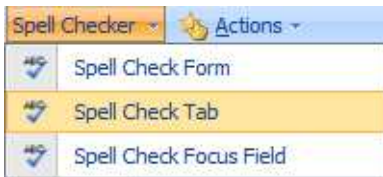




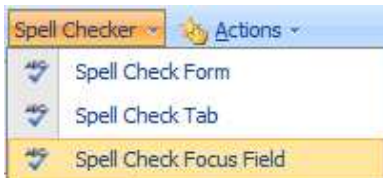
Open any Account record and select "Spell Checker" on the ISV toolbar.



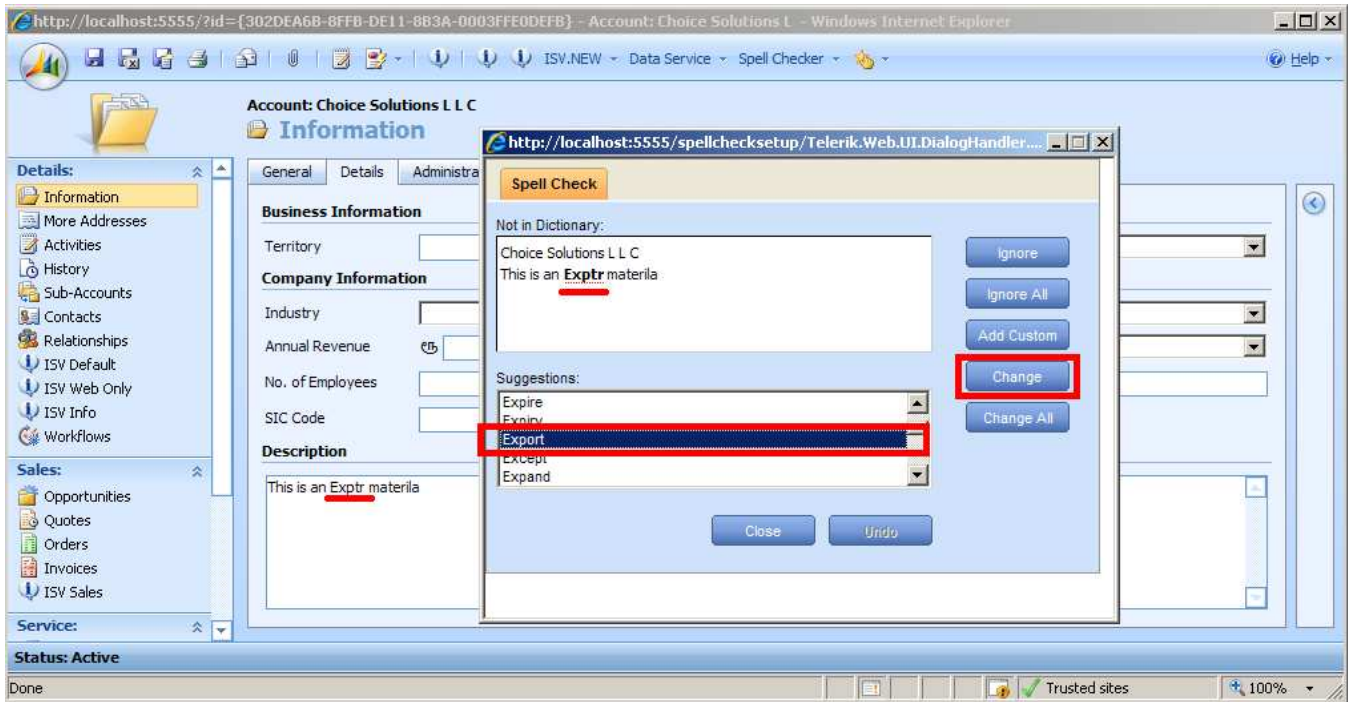
- a. **Spell Check Form :**
Spell Check Form allows you to run spell check for all the fields on an Entity Form.



- b. **Spell Check Tab:**
Spell Check Tab allows you to spell check only on the fields against the selected Tab.



- c. **Spell Check Focus Field:**
Spell Check Focus Field allows you to spell check only on the Field you have selected.



Now you have successfully installed Spell Checker into MSCRM 4.0.

Removing Spell Check button from the ISV toolbar:

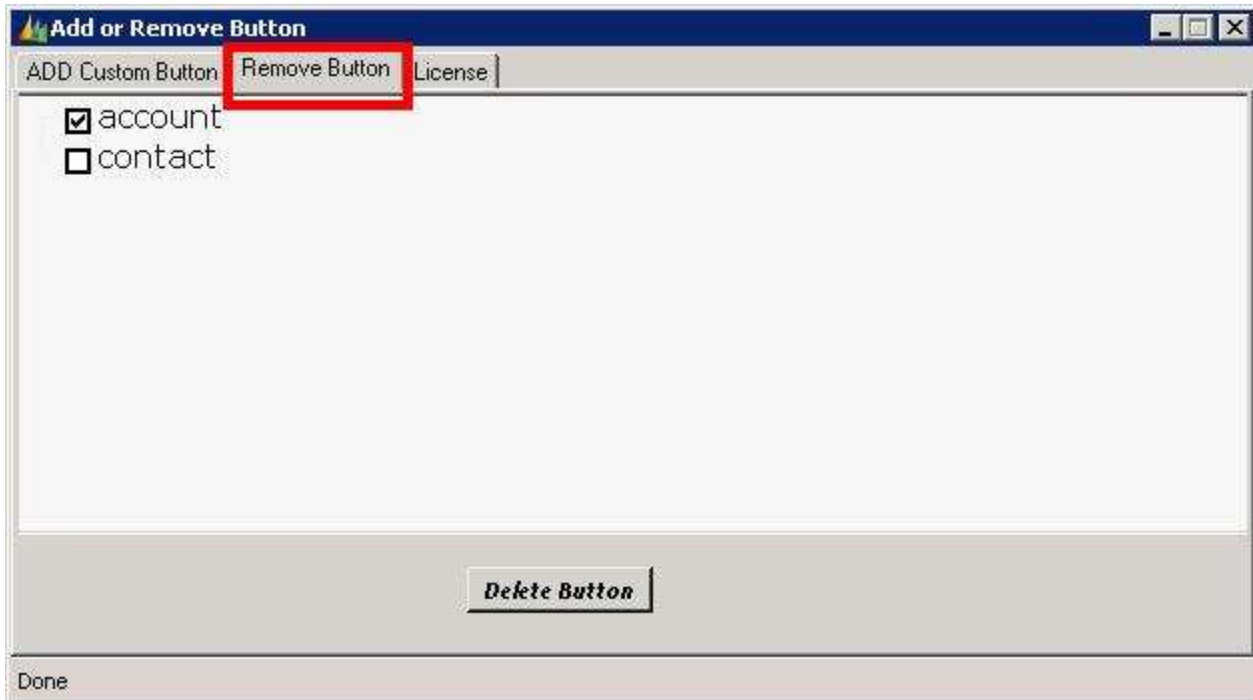
Double click on the icon **“SpellChecker”** on the desktop.



You will be presented with a MTC Spell Checker installation wizard as shown below.
Provide the CRM server link and select the organization name from the list.



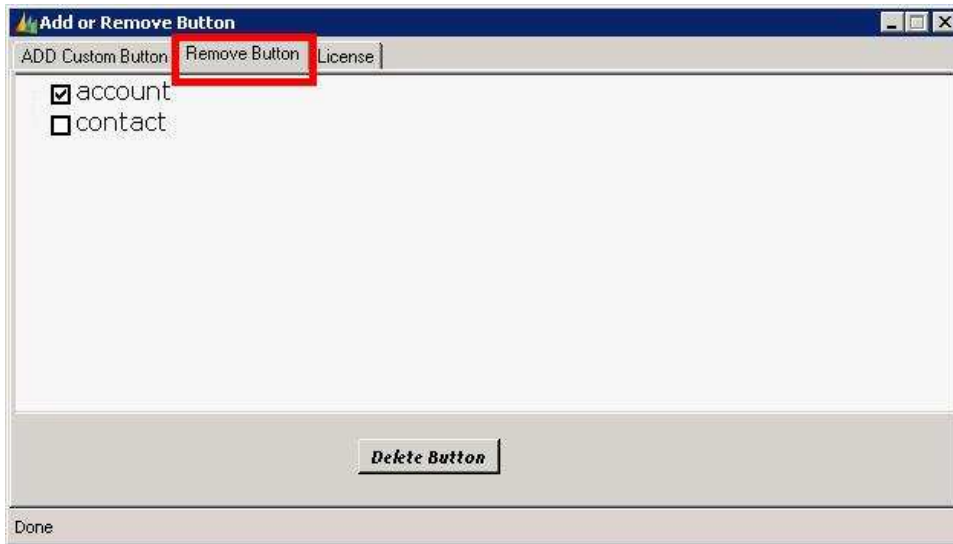
Select the "Remove Tab" and uncheck the entity for which you want to remove the Spell Checker button. Then just click on the Delete Button.



Uninstall Spell Check for Dynamics CRM 4.0:

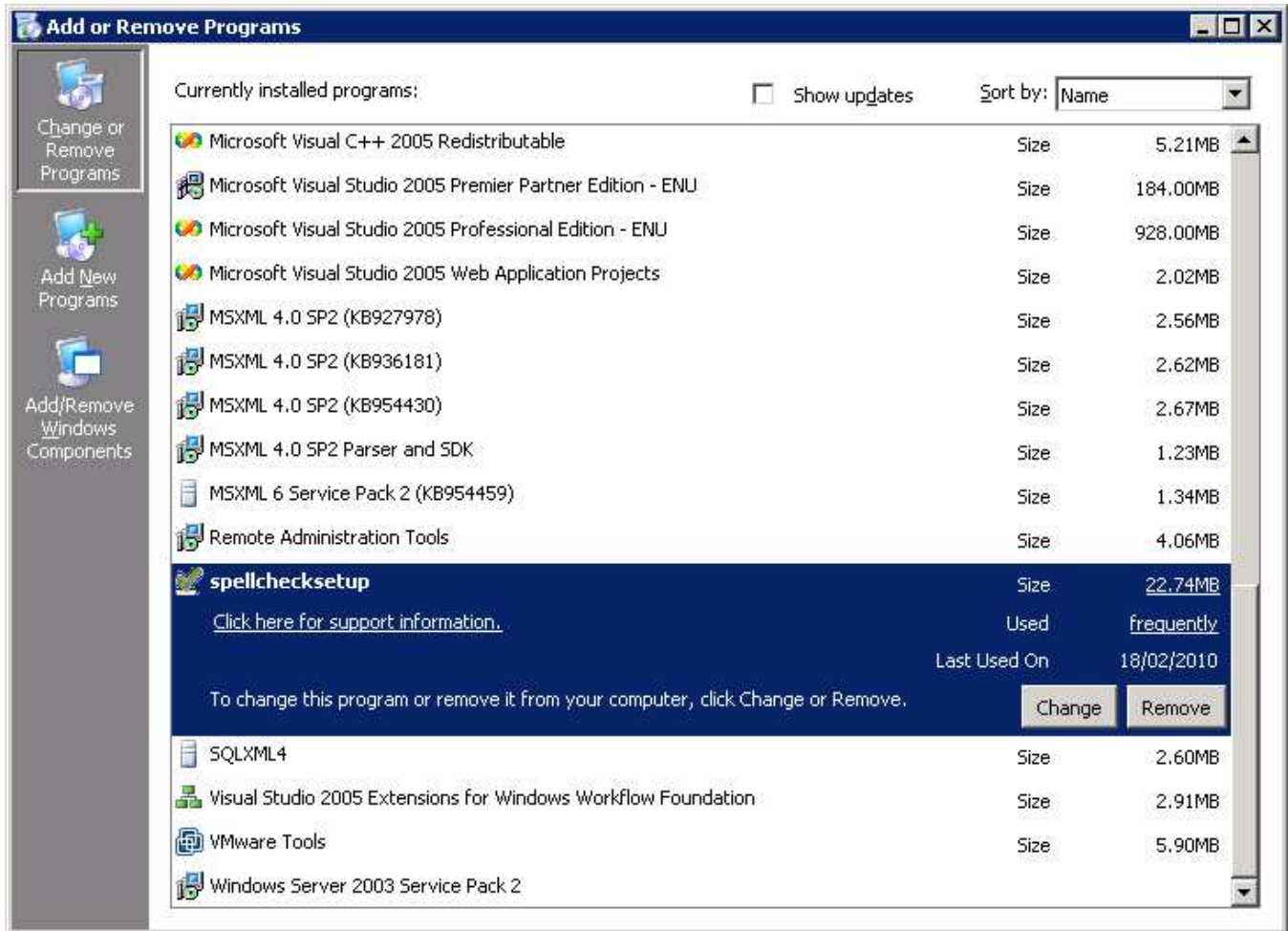
Please take make a back-up of MTCSettings.xml in <<crmwebfolder>>/spellchecksetup, this file contains the license keys.

Before uninstalling you can make sure that you remove buttons and javascript . **This step is necessary if you are completely uninstalling the application and you are not going to use further.**



To completely uninstall Spell Check use the Windows **Add/Remove Programs** option located in Windows' Control Panel.

Locate and select "**spellchecksetup**"



Click **Remove**.

Delete spell check setup folder located in <<crmwebfolder>>

This has now removed Spell Check for Dynamics CRM from your solution's system entirely.

Troubleshooting Spell Check for Dynamics CRM 4.0:

1. Spell check does not open and you get below error message in event viewer

Microsoft.Crm.WebServices.Crm2007.MultipleOrganizationSoapHeaderAuthenticationProvider, Microsoft.Crm.WebServices, Version=4.0.0.0, Culture=neutral, PublicKeyToken=31bf3856ad364e35' doesn't exist.

Parameter name:

Microsoft.Crm.WebServices.Crm2007.MultipleOrganizationSoapHeaderAuthenticationProvider, Microsoft.Crm.WebServices, Version=4.0.0.0, Culture=neutral, PublicKeyToken=31bf3856ad364e35

Description: An unhandled exception occurred during the execution of the current web request. Please review the stack trace for more information about the error and where it originated in the code.

Exception Details: System.ArgumentException:

'Microsoft.Crm.WebServices.Crm2007.MultipleOrganizationSoapHeaderAuthenticationProvider, Microsoft.Crm.WebServices, Version=4.0.0.0, Culture=neutral, PublicKeyToken=31bf3856ad364e35' doesn't exist.

Parameter name:

Microsoft.Crm.WebServices.Crm2007.MultipleOrganizationSoapHeaderAuthenticationProvider, Microsoft.Crm.WebServices, Version=4.0.0.0, Culture=neutral, PublicKeyToken=31bf3856ad364e35

Resolution

If you have a CRM 3.0 Server with custom ASP.Net pages in a virtual directory within the CRM website, when you upgrade the server to CRM 4.0, the custom pages fail, giving the error:

Microsoft.Crm.WebServices.Crm2007.MultipleOrganizationSoapHeaderAuthenticationProvider, Microsoft.Crm.WebServices, Version=4.0.0.0, Culture=neutral, PublicKeyToken=31bf3856ad364e35' doesn't exist

You can also get the same error when creating a new virtual directory within the CRM website.

The reason for the error is that CRM adds 2 HttpModules (MapOrg and CrmAuthentication) to web.config in the root of the CRM website. The CrmAuthentication HttpModule is in the microsoft.crm.webservices.dll assembly, which is not in the path of the custom virtual directory.

Ensure microsoft.crm.webservices.dll can be found. To do this, add it to the global assembly cache, then run iisreset (or recycle the CrmAppPool application pool)

2. Spell Check on Focus Field and on Focus Tab does not work

Resolution

Please “Publish” the associated CRM Entity in **Settings -> Customizations**. Once published Spell Check will appear and function in the Entity.

3. Manually removing Javascript from onload event

Go to **Settings → Customization → Customize Entity → Locate and select the Entity you want to remove the onload event from**

→ Go to **Forms and Views -> open the form → go to Property -> onload event**

Locate the following script and remove:

```
function AddToolTip( controlId , tooltip ){var control = document.getElementById( controlId );control.attachEvent( \"onfocus\", ShowToolTip );}function ShowToolTip(){var eElem = document.forms['crmForm'].elements;if (eElem.length>0){for (var i = 0; i < eElem.length; i++){if(eElem[i].getAttribute('mtcFocused')==='1'){eElem[i].setAttribute('mtcFocused', '0')}}}var control = event.srcElement;control.setAttribute('mtcFocused', '1');}var eElem = document.forms['crmForm'].elements;if (eElem.length>0){for (var i = 0; i < eElem.length; i++) {if ( eElem(i).id != undefined && eElem(i).id != \" \" && (eElem(i).type=='text' || eElem(i).tagName=='TEXTAREA') ){AddToolTip(eElem(i).id,eElem(i).id)}}}function AddToolTab( controlId , tooltip ){var control = document.getElementById( controlId );control.attachEvent( \"onclick\", ShowTab);}function ShowTab(){ var tab=document.forms['crmForm'].getElementsByTagName('li');if(tab.length>0){for (var i = 0; i < tab.length; i++){if(tab(i).getAttribute('mtctabFocused')==='1'){tab[i].setAttribute('mtctabFocused', '0')}}}var control = event.srcElement;control.setAttribute('mtctabFocused', '1');}var tab=document.forms['crmForm'].getElementsByTagName('li');if(tab.length>0){ for (var i = 0; i < tab.length; i++) { AddToolTab(tab(i).id,tab(i).id);}}
```

Remove this script.

Please email MTC’s support specialist at ra@mtccrm.com with any unresolved issues on Spell Check for Microsoft Dynamics CRM.

Please Contact sales@mtccrm.com for additional licenses or any license issues for Spell Check for Microsoft Dynamics CRM 4.0.

Thank You for Using MTC’s Spell Check for Microsoft Dynamics CRM.