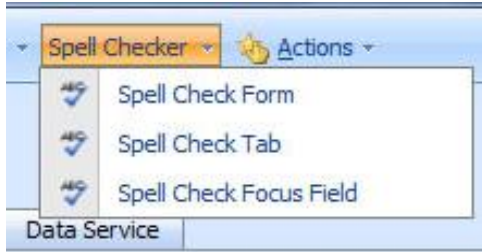


# ABC Spell Checker

For Microsoft Dynamics CRM

This simple well integrated add-on to the Microsoft Dynamics CRM / XRM 4.0 or 2011 platform adds immediate value to any communications and business processes through the assurance of spell checking technology. This is the number # 1 most requested addition by users!



**Professional and accurate documents directly from Dynamics CRM makes the proper impression.**

**Poor spelling or simple typos by your staff reflects badly on your business. Eliminate this risk!**

**Most Languages Available!**

## Spell Checking from the CRM web client . . .

**See how accurate spelling on all CRM communications will assist your image . . .**

Available at [www.DynamicsExchange.com/SC.aspx](http://www.DynamicsExchange.com/SC.aspx)

BY **MTC** [www.MTCCRM.com/spell\\_check.html](http://www.MTCCRM.com/spell_check.html)  
Management Technology Consulting

### Spell Checker Uses:

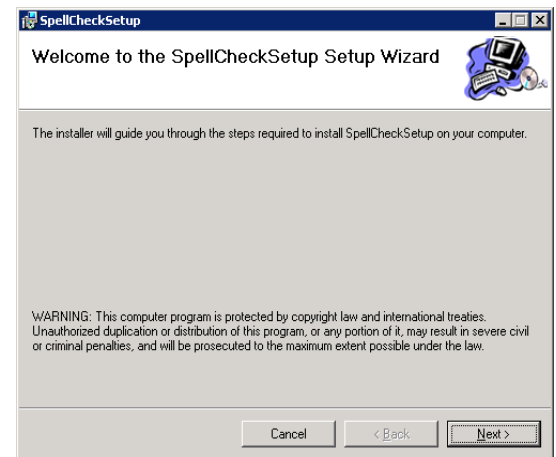
Spell Checker is implemented to all Microsoft Dynamics CRM "Activities" and "Templates" including:

- |               |                          |
|---------------|--------------------------|
| ✓ Task        | Service Activity         |
| ✓ Fax         | Mail Merge Template      |
| ✓ Phone Call  | E-Mail Template          |
| ✓ Email       | Contract Template        |
| ✓ Letter      | Campaign Response        |
| ✓ Appointment | Your Custom Entity . . . |

Email spell check is the most popular usage and a set-up option allows email "Spell Check on Send" functionality.

Spell Checker is easily configurable to implement in all standard or even all your custom Microsoft Dynamics CRM / XRM Entities including:

- |               |                  |
|---------------|------------------|
| ✓ Lead        | Case             |
| ✓ Account     | Sales Literature |
| ✓ Contact     | Product          |
| ✓ Opportunity | Campaign         |
| ✓ Quote       | Marketing List   |
| ✓ Order       | Invoice          |



**Optional Choice of Alternate Dictionaries including Google Dictionary**

**Spell Checker for Dynamics CRM is Easy to self-install – Unlimited call support is included!**

# ABC Spell Checker For Microsoft Dynamics CRM

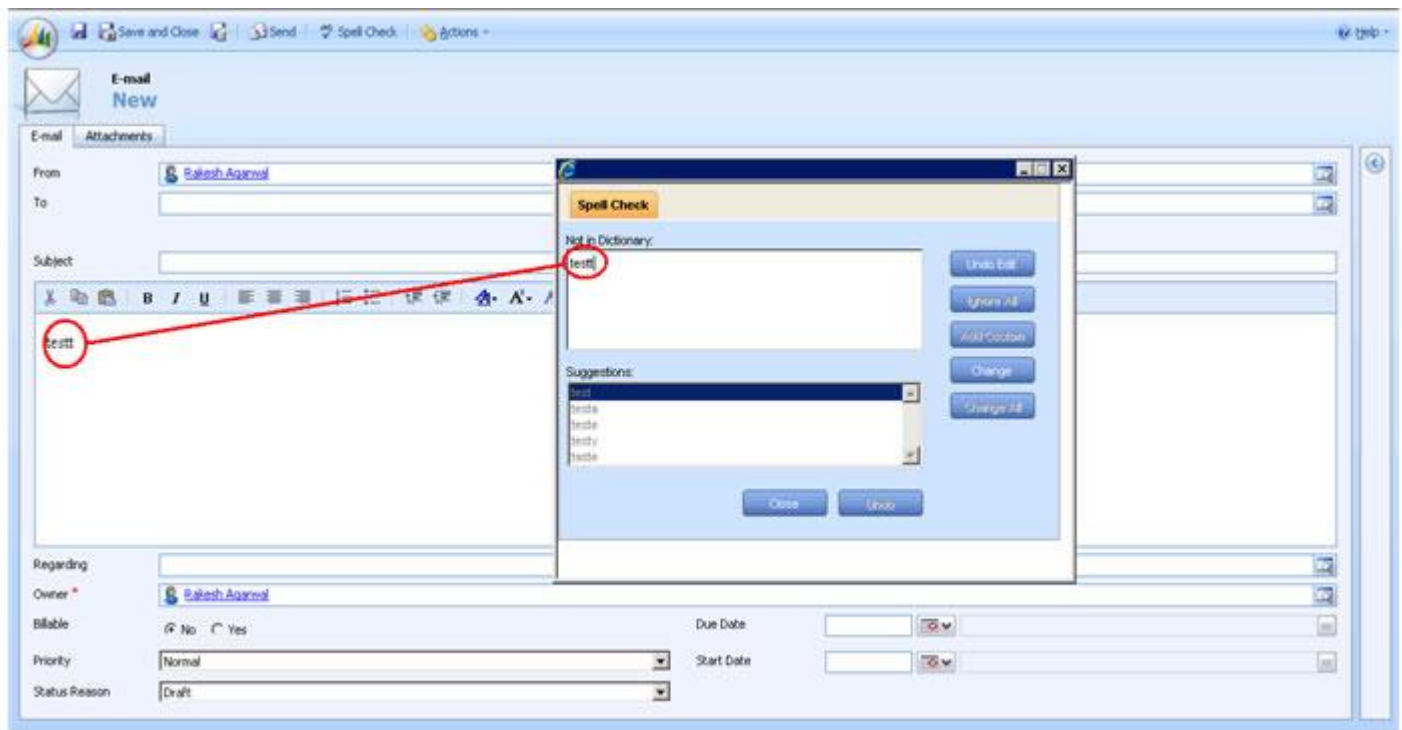
Spell Check for Dynamics CRM is developed to the Microsoft Dynamics CRM Solution Development Kit and is seamlessly and elegantly implemented within CRM. Spell Check is a valuable addition for any CRM user in a professional selling or customer service environment.

The Microsoft Dynamics CRM platform does not provide control over the Article template and as such Spell Checker can NOT be installed there.

The Microsoft Dynamics CRM platform does not provide a tool bar in the Quick Campaign function Activities and as such Spell Checker is not be installed there.

Spell Checking for "Notes" is only possible when the Note is generated from the menu: Actions -> Create Note. Option

Complete compliance to the Microsoft Dynamics CRM SDK  
Most CRM Mode – On-Premises, Internet Facing Deployment (IFD), Hosted



Self-install for Windows Server 2003, 2008 and SQL Server 200 and 2008 and future versions including SBS

Licensed in equal number to enabled CRM Users for lowest cost **Only \$10.00 Per CRM User - US English**

Additional Languages available: **Alternate Language Module \$100.00 per language**

Separate Installers available for Windows 32 bit and Windows 64 bit server environments.

One (1) year Free maintenance and CRM version upgrade included.

Free live web and phone installation and use support

Available at [www.DynamicsExchange.com/SC.aspx](http://www.DynamicsExchange.com/SC.aspx) or [www.MTCCRM.com/spell\\_check.html](http://www.MTCCRM.com/spell_check.html)



Call 323-851-5008 8:00 AM to 5:00 PM  
323-853-0076 5:00 AM to 8:00 AM

[www.MTCCRM.com/salesteam@mtccrm.com](http://www.MTCCRM.com/salesteam@mtccrm.com)

Find it on **DynamicsExchange.com**  
The Community Resource and Application Store for  
CRM / XRM Success